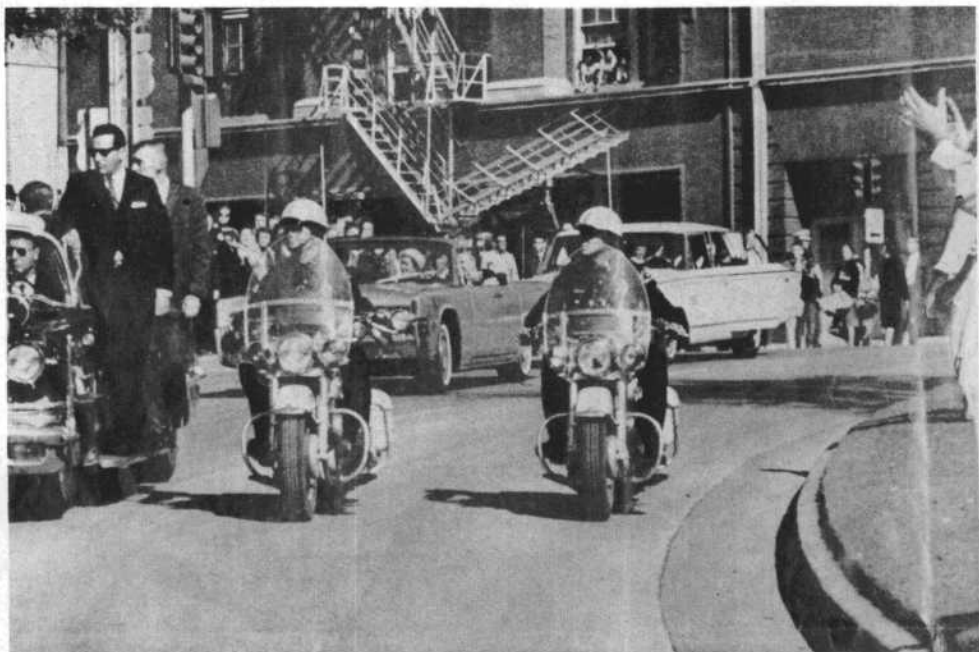




One hundred yards more and they would have reached the

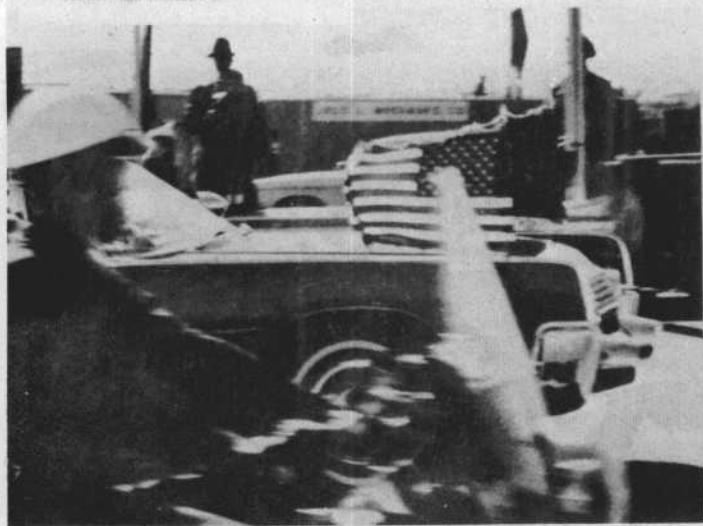


YARBOROUGH EXHIBIT A



## safety of an overpass. Then three shots rang out.

Yarborough Exhibit A



YARBOROUGH EXHIBIT A—Continued

▲ Everyone commented on the unusual length of the crowd in Dallas. The President looked forward to the speech he was to give in a few minutes. Then suddenly the President slumped forward, his face half concealed by the car mirror, he is already near death. Jacqueline (with gloves) supports Kennedy's left arm. While the crowd is still unaware of the tragedy Secret Service man in silhouette has back taken toward the brick building (left rear) from which the fatal shots were fired.

▲ With President Kennedy crumpled on the floor, his feet protruding grotesquely over the right side of the limousine, the driver pulled out of the motorcade and began speeding toward Dallas's Parkland Memorial Hospital. Mrs. Kennedy cradles her husband's head in her arms, while the wounded Governor Connally and his wife crouch to seek further gunfire. Secret Service agent in rear leans forward in vain effort to assist the dying President. But President John Kennedy never regained consciousness.

25