



PHOTOGRAPH FROM ZAPRUDER FILM



PHOTOGRAPH FROM RE-ENACTMENT

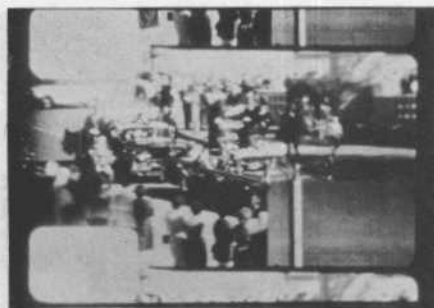


PHOTOGRAPH THROUGH RIFLE SCOPE

DISTANCE TO STATION C 95.6 FT.
 DISTANCE TO RIFLE IN WINDOW 138.2 FT.
 ANGLE TO RIFLE IN WINDOW 26°52'
 DISTANCE TO OVERPASS 391.5 FT.
 ANGLE TO OVERPASS 0°07'

FRAME 166

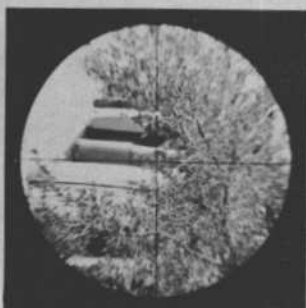
COMMISSION EXHIBIT 889



PHOTOGRAPH FROM ZAPRUDER FILM



PHOTOGRAPH FROM RE-ENACTMENT



PHOTOGRAPH THROUGH RIFLE SCOPE

DISTANCE TO STATION C 114.0 FT.
 DISTANCE TO RIFLE IN WINDOW 154.9 FT.
 ANGLE TO RIFLE IN WINDOW 24°14'
 DISTANCE TO OVERPASS 372.5 FT.
 ANGLE TO OVERPASS 0°03'

FRAME 185

COMMISSION EXHIBIT 890