



PHOTOGRAPH FROM ZAPRUDER FILM



PHOTOGRAPH FROM RE-ENACTMENT

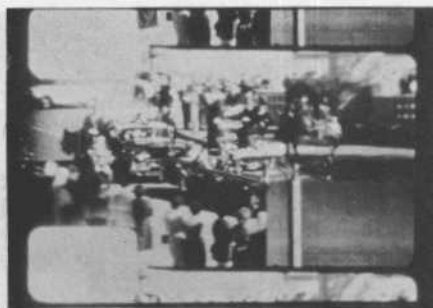


PHOTOGRAPH THROUGH RIFLE SCOPE

DISTANCE TO STATION C ..... 95.6 FT.  
 DISTANCE TO RIFLE IN WINDOW ..... 138.2 FT.  
 ANGLE TO RIFLE IN WINDOW ..... 26°52'  
 DISTANCE TO OVERPASS ..... 391.5 FT.  
 ANGLE TO OVERPASS ..... 0°07'

## FRAME 166

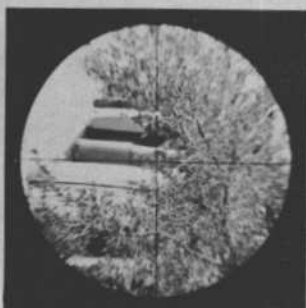
COMMISSION EXHIBIT 889



PHOTOGRAPH FROM ZAPRUDER FILM



PHOTOGRAPH FROM RE-ENACTMENT



PHOTOGRAPH THROUGH RIFLE SCOPE

DISTANCE TO STATION C ..... 114.0 FT.  
 DISTANCE TO RIFLE IN WINDOW ..... 154.9 FT.  
 ANGLE TO RIFLE IN WINDOW ..... 24°14'  
 DISTANCE TO OVERPASS ..... 372.5 FT.  
 ANGLE TO OVERPASS ..... 0°03'

## FRAME 185

COMMISSION EXHIBIT 890