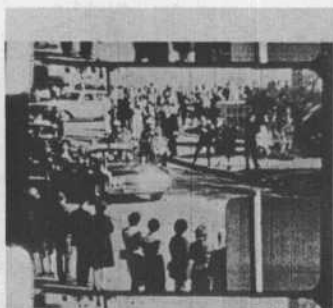




COMMISSION EXHIBIT 887



PHOTOGRAPH FROM ZAPRUDER FILM



PHOTOGRAPH FROM RE-ENACTMENT



PHOTOGRAPH THROUGH RIFLE SCOPE

DISTANCE TO STATION C .....	94.7 FT.
DISTANCE TO RIFLE IN WINDOW .....	137.4 FT.
ANGLE TO RIFLE IN WINDOW .....	26°58'
DISTANCE TO OVERPASS .....	392.4 FT.
ANGLE TO OVERPASS .....	0°07'

**FRAME 161**

COMMISSION EXHIBIT 888