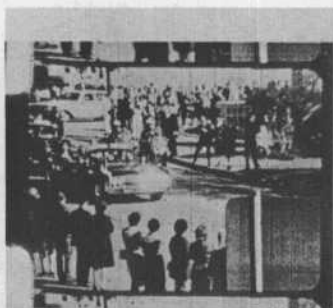




COMMISSION EXHIBIT 887



PHOTOGRAPH FROM ZAPRUDER FILM



PHOTOGRAPH FROM RE-ENACTMENT



PHOTOGRAPH THROUGH RIFLE SCOPE

DISTANCE TO STATION C 94.7 FT.
 DISTANCE TO RIFLE IN WINDOW 137.4 FT.
 ANGLE TO RIFLE IN WINDOW 26°58'
 DISTANCE TO OVERPASS 392.4 FT.
 ANGLE TO OVERPASS 0°07'

FRAME 161

COMMISSION EXHIBIT 888