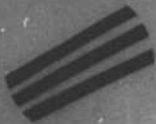

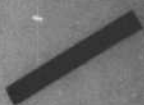


Forensic Exhibit No. 22

RACIAL DETERMINATION OF HAIRS




GENERAL APPEARANCE OF HAIR

	<u>CAUCASIAN</u>	<u>NEGROID</u>	<u>MONGOLOID</u>
			
<u>DIAMETER</u>	SLIGHT FLUCTUATION	GREAT FLUCTUATION	LITTLE OR NO FLUCTUATION
<u>COLOR</u>	BLACK TO BLOND	DENSE BLACK	BLACK
<u>TEXTURE</u>	SOFT AND FLEXIBLE	VERY STIFF AND Wavy	FLEXIBLE
<u>SIZE</u>	MEDIUM	MEDIUM	LARGE

COMMISSION EXHIBIT 668

Forensic Exhibit No. 23

RACIAL DETERMINATION OF HAIRS

	<u>CAUCASIAN</u>	<u>NEGROID</u>	<u>MONGOLOID</u>
			
<u>CUTICLE</u>	MEDIUM TO THICK	THICK	THICK
<u>PIGMENT</u>	FINE TO COARSE	MEDIUM TO COARSE	MEDIUM TO COARSE
<u>PIGMENT DISTRIBUTION</u>	EVEN	CLUMPED	HEAVILY DISPERSED

COMMISSION EXHIBIT 669

RACIAL DETERMINATION OF HAIRS

CAUCASIAN



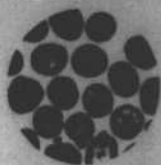
OVAL

NEGROID



FLAT

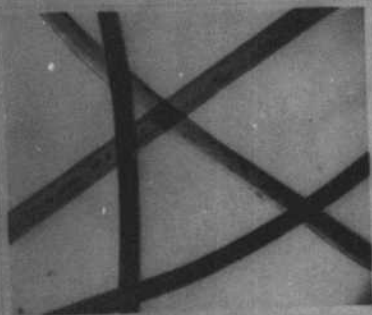
MONGOLOID



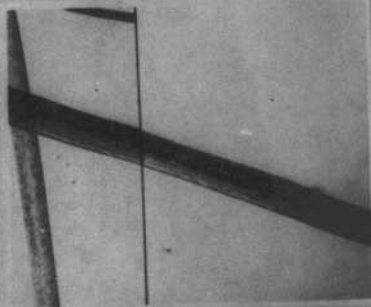
ROUND

Cross Section
of HAIR

COMMISSION EXHIBIT 670



MICROPHOTOGRAPH OF OSWALD'S LEG HAIRS



HAIR FROM OSWALD

HAIR FROM OSWALD

MICROPHOTOGRAPH SHOWING HAIR BEING
LAMB HAIR SHAVES FROM OSWALD AND LEG HAIR
REMOVED FROM THE C-18 SHAVES

COMMISSION EXHIBIT 671