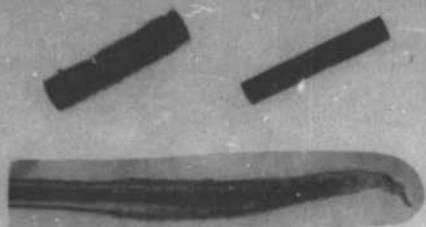
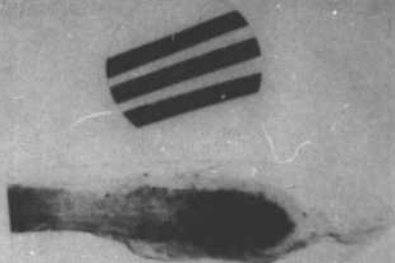


ANIMAL HAIRS



HUMAN HAIRS



1 GENERAL APPEARANCE

- A COLOR
- B LENGTH
- C TEXTURE

2 MEDULLARY STRUCTURE

- A SHAPE OF CELLS
- B WIDTH OF MEDULLA

3 PIGMENTATION

- A SIZE
- B DISTRIBUTION IN CORTEX

4 ROOT

- A SIZE
- B SHAPE

5 SCALES

- A SIZE
- B SHAPE

COMMISSION EXHIBIT 667