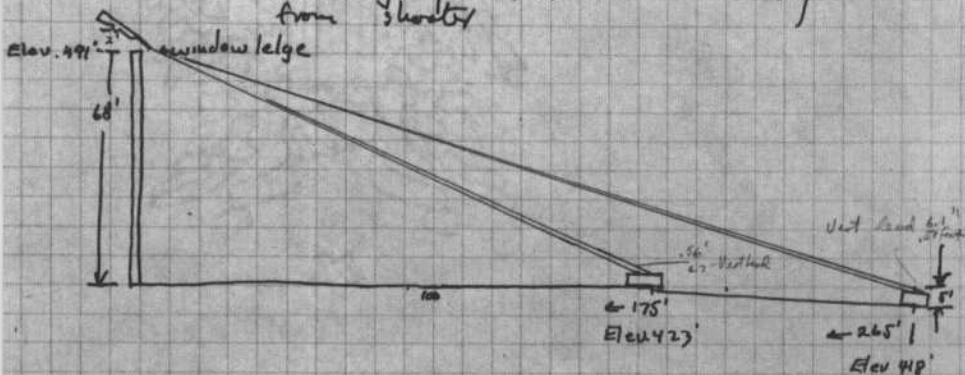


3/27/64

Figures furnished by Melvin Eisenberg, Pres. Comm.
 on 3/27/64 for chart showing
 relative sighting conditions as car moves away
 from shooter



Ht of shooter's sight 70'± above car @ 1st shot
 75'± " " " 3rd shot

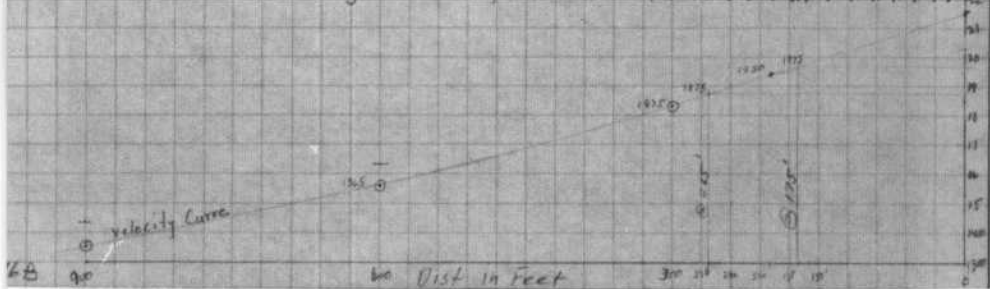
Alt	Ft/Sec
10	14.6
12	17.6
14	20.5
16	23.5

Speed of car 90' travelled ÷ 5.5 Sec = 16.3'/sec

Miles/hour

Ave Vel 175' = 2070 ; .085 Sec ; Car Moved 12' 1.8' 20	29.4
" " 265' = 2620 ; .131 Sec " " 21' 2.9' 25	36.7
" " 300' = 3000 ; .15 Sec " " 24' 3.3' 30	44.0

Bullet Flight Time in Seconds



COMMISSION EXHIBIT 560